



The Catalina Triple

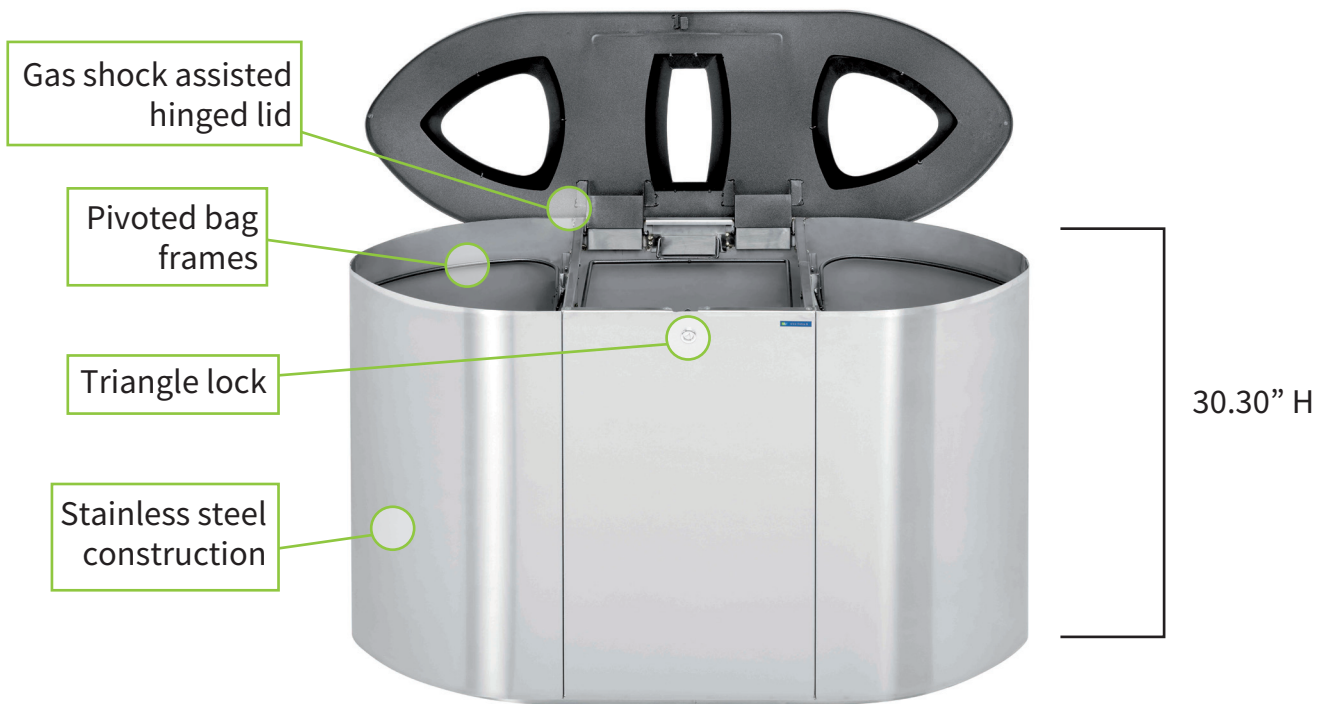
The Catalina series is an elegant recycling bin collection perfect for any public setting: shopping malls, airports, terminals, fairgrounds, or any high-traffic location. The Catalina series is specifically designed for the collection of different waste streams in public venues. Equipped with color-coded recycling labels, messages, and symbols, waste sorting with the Catalina is a no-brainer.

Best selection, lowest prices.

Call us for Quantity Discounts and Custom Designs!

800.664.5340 www.recycleaway.com

The Catalina Triple



SPECIFICATIONS:

Capacity: **3 x 26 = 78 Gal**

Dimensions: **17.70" w x 45.70" l x 30.30" h**

Weight: **117 lbs**

Setting: **Indoor**

Material: **Stainless steel body**
Powder coated black lid

Sorting labels: **Waste, Paper, and Cans & Bottles**



Best selection, lowest prices.

Call us for Quantity Discounts and Custom Designs!

800.664.5340 www.recycleaway.com