



TYPE 2

The CLAREMONT

Key features:

- Constructed with 97% pure Type 2 recycled plastic
- Offered in a variety of colors and panel options
- Attractive solution for recycling programs
- Opening identification and restrictive
- Rigid liner included

Available Colors:

plain panel colors



Material Aesthetics:

- Manufactured from high-grade of recycled HDPE
- Top-of-the-line pigments and UV inhibitors



Overlay Logos

4 color printed logo or company name set in the panel of the furnishing.



Overlay Symbols

Help users identify waste streams visually with overlaid symbols. Available in small, medium and large sizes.



Restrictive Openings

Keep recycling streams from getting contaminated - all at no extra cost.



Opening IDs

Clearly labeled waste and recycling streams help identify openings and reduce cross contamination.



"Slow-Stay" Hinged Lid

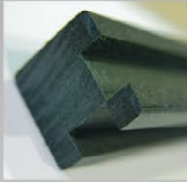
Easily open and service bins without worrying about the lid slamming shut.



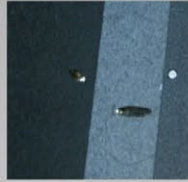
Seamlessly Built

Flush post-to-panel construction gives these units a clean, stylish appearance without sacrificing strength.

Tested Construction Methods:



Dado Grooved Posts



Pocket Screw Joinery



Marine-Grade Hardware



Levelers



Metal Reinforcements



Removable Liner



Adjustable Levelers

Ensures longevity of your unit by giving product stability on uneven surfaces.



Casters

Add casters for easy mobility. Regular and lockable casters available.

Configurations

Single

Double

Triple

Topload



Single W' x D' x H'

Double W' x D' x H'

Triple W' x D' x H'

12 Gallon

18" x 15" x 32"

29" x 15" x 32"

44" x 15" x 32"

26 Gallon

25" x 20" x 32"

42" x 20" x 32"

63" x 20" x 32"

32 Gallon

25" x 20" x 37"

42" x 20" x 37"

63" x 20" x 37"

38 Gallon

24" x 24" x 31"

45" x 24" x 34"

68.75" x 24" x 32"

45 Gallon

24" x 24" x 36"

45" x 24" x 39"

68.75" x 24" x 37"

55 Gallon

24" x 24" x 40"

45" x 24" x 43"

72" x 24" x 43"

TYPE 2 Material

Type-2 Material is impervious to insects, moisture and mold, meaning it won't rot, splinter or become dinner for pests as wood often does. Added UV inhibitors keep its colors stable while bonding agents create complete molecular linkage for optimum structural integrity.

- Manufactured from high-grade of recycled HDPE, and unlike other plastic recycling centers, contains no foam fillers
- Top-of-the-line pigments and UV inhibitors are used to maintain color for decades



Warranty

Nex-Terra offers a three year limited warranty on all of our products to be free from defects in workmanship and/or material(s). Nex-Terra makes no warranty with respect to either the merchantability of our products, or their suitability for any specific purpose or use.