

**Designed for hospitality and hotel venues, suites in arenas and stadiums, class A office parks, as well as anywhere high-end style and functionality are required.**

- Made with heavy gauge aluminum
- Corrosion-resistant and fire safe
- Available in two finishes, stainless steel and black
- Brushed stainless steel or powder coated receptacle
- Bag retainer bands included
- Standard with hinged lid
- Optional 21 gallon liner available
- OSHA & ADA compliant





CL25-BK



CL40-BK



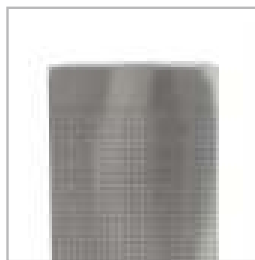
CLRC40-BK



CLHR12-BK



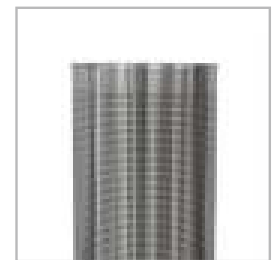
CL25-SS



CL40-SS



CLRC40-SS



CLHR12-SS

ITEM #	DESCRIPTION	CAPACITY	DIMENSION	WEIGHT
CL25-BK	Celestial square waste receptacle, perforated design, bag retainer bands, black	25 gallon	15.5" x 15.5" x 30.5"	27lb
CL25-SS	Celestial square waste receptacle, perforated design, bag retainer bands, Stainless Steel	25 gallon	15.5" x 15.5" x 30.5"	27lb
CL40-BK	Celestial square waste receptacle, perforated design, bag retainer bands, black;	40 gallon	18.75" x 18.75" x 30"	37lb
CL40-SS	Celestial square waste receptacle, perforated design, bag retainer bands, Stainless Steel	40 gallon	18.75" x 18.75" x 30"	37lb
CLRC40-BK	Celestial rectangular waste receptacle, perforated design, bag retainer bands, black	40 gallon	24" x 12.5" x 30"	35lb
CLRC40-SS	Celestial rectangular waste receptacle, perforated design, bag retainer bands, Stainless Steel	40 gallon	24" x 12.5" x 30"	35lb
CLHR12-BK	Celestial half round waste receptacle, perforated design, black	12 gallon	18" x 9" x 32"	26lb
CLHR12-SS	Celestial half round waste receptacle, perforated design, Stainless steel	12 gallon	18" x 9" x 32"	26lb